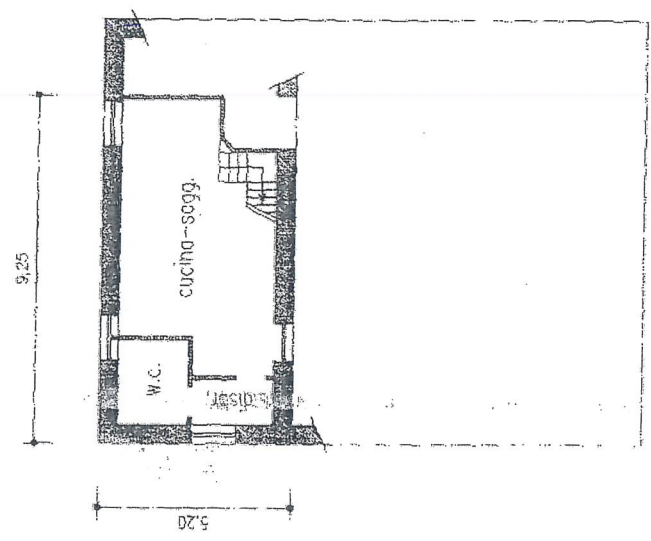


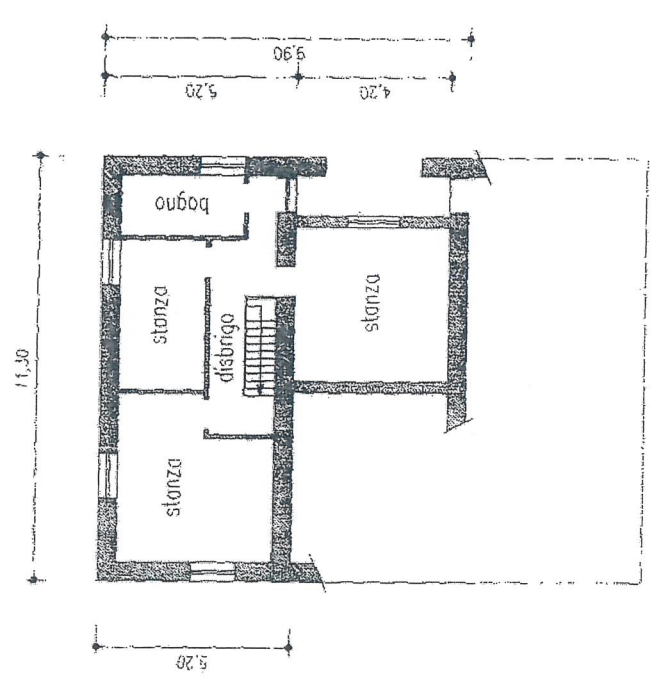
PIANO TERRA

H min = 2,20 metri
H max = 2,80 metri



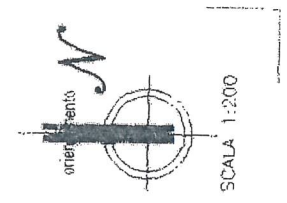
PRIMO PIANO

H min = 2,30 metri
H max = 2,90 metri



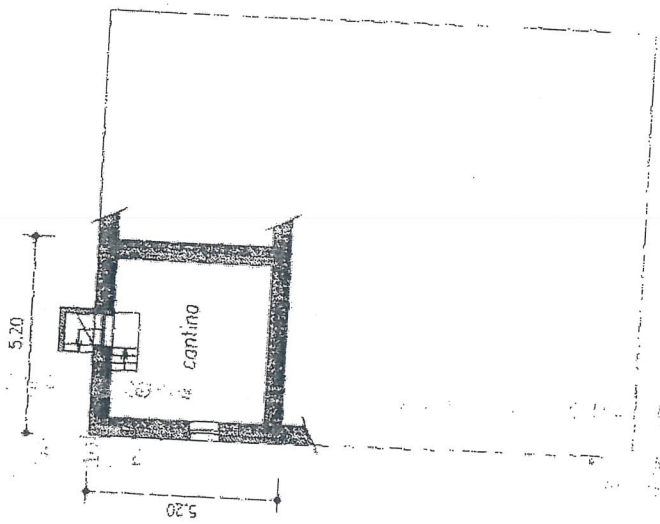
PRIMO PIANO

H = 2,60 metri



UBA3

(*) indicare le principali misure esterne



PIANO INTERRATO

H min = 2,20 metri
H max = 2,80 metri